

Sentinel Medical  
**Aegis with BRIGHT® 2.0**  
Version 2



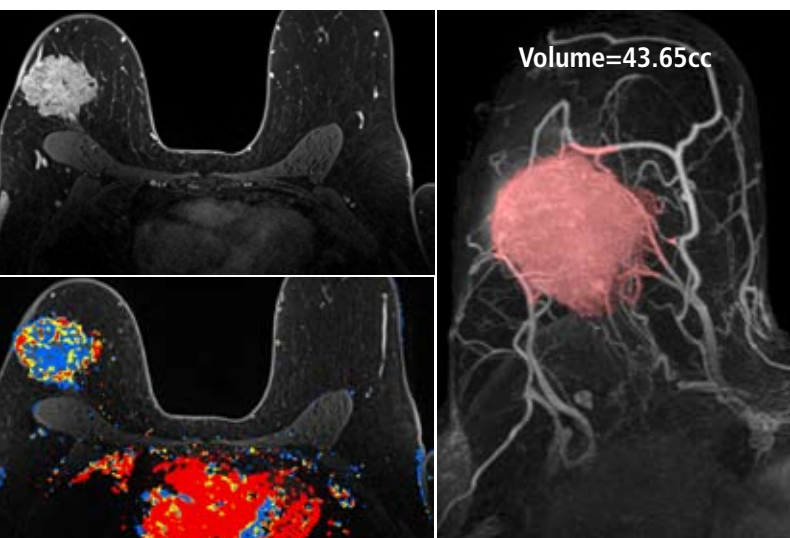
Introducing the Next Generation of  
MR Imaging for Breast Cancer Management  
Advanced software for efficient analysis  
and intervention



As demand for breast Magnetic Resonance Imaging (bMRI) increases, radiologists confront an overwhelming challenge: how to ensure the very best disease management for each patient while building a lean, efficient practice.

**Aegis with BRIGHT 2.0** optimizes the performance of two precious resources: highly-skilled professionals and leading edge technology.

This revolutionary system from Sentinelle Medical was developed from the ground up with the distinct needs of radiologists and technologists in mind, offering flexibility and workflow efficiency.



Rendering and colourization of lesion(s)

Built on Sentinelle's advanced 3D framework, Aegis with BRIGHT 2.0 offers an exceptionally user friendly graphical interface for analyzing breast MR images and guiding interventional procedures.

Aegis with BRIGHT 2.0 combines the speed and flexibility of a 3D diagnostic workstation with dedicated bMRI algorithms including kinetic curves and colour maps, automatic volume calculations and customizable reports. Powerful software and hardware technology provides the clinician with real-time interactive control of large dynamic datasets. Advanced image analysis and accurate interventions are made easy through automated image processing, registration and workflow.

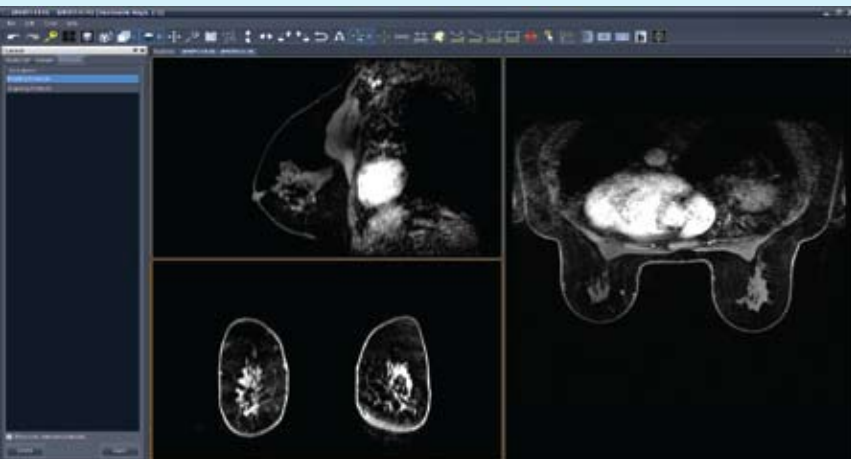
### Breakthrough design delivers unmatched benefits

**Powerful analysis** driven by true, real time, 3D image processing with flexible tools for image review.

**Improved efficiency** with hanging protocols, automated reporting, interventional accuracy, dynamic real time processing and real time targeting of multiple targets.

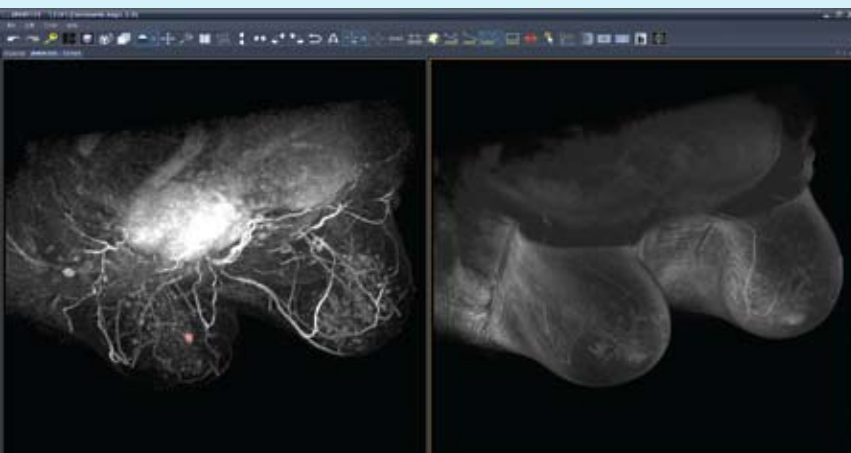
**Superior flexibility** for your practice with a choice of Image Analysis or Interventional modes. Process and display any data (time enhancement curves, subtraction, MIPs and radial reformats) on any generated image set – reformatted or 3D volume – and view in any orientation in real time.

**Easy targeting** for the optimal medial, lateral or bilateral approach for singular or multi site biopsy.

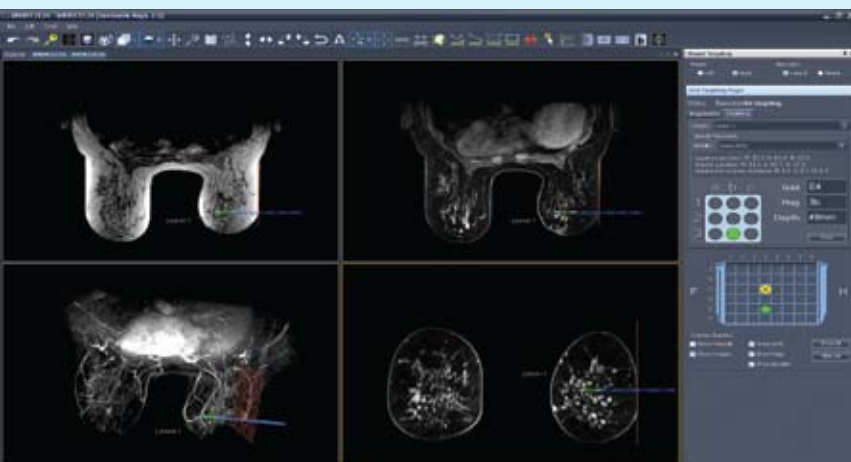


Hanging protocols can be updated automatically and without a customer service call

Fully linked dataset provide visualization of the same region in all image sets



Real-time 4D Reconstruction (3D + time)



Improved interventional workflow through automated registration and interventional orientation reformat

## Powerful features optimize breast MRI

- Automatic push and pull of DICOM data from any MRI scanner and PACS
- Real-time access to volume data
- Real-time Maximum Intensity Projections (MIPs) including dynamic image sets
- Single click to subtractions and time enhancement curves, with no pre-processing slow-down
- Software automatically adapts to MRI vendor specific dynamic protocol parameters (without a service call)
- Dual Monitor support
- Support for 64 bit Windows versions
- DICOM compliant
- Fully compatible and optimized for use with Sentinelle Medical imaging systems

## Optimizing Image Analysis

- Fast load times and Time-to-First-Image
- Real-time access to image data
- 3D Visualization Architecture
- Multiple time point curve fitting
- Breast Comparison in 2D, MIP and solid views for any orientation for kinetic analysis
- Advanced optical flow based 3D motion correction algorithm
- Automated pre-processing of 3D motion correction option
- Sentinelle Smart Track feature helps clinicians track structures
- Time enhancement visualization algorithm for better interpretation of pixel intensity changes
- Dynamically adjustable time enhancement Thresholds
- Curve filtering algorithm to reduce noise in kinetic colourization map
- Lesion centric view for improved morphological analysis

## Optimizing Intervention

- Supports all major manufacturers of vacuum assisted breast biopsy devices
- Define multiple targets and select approach (medial/lateral, right/left) without redoing registration
- Automated fiducial detection
- Interventional reformat allows breast to be visualized in same orientation as patient

## More value for your practice

- Combine Sentinelle coils and Aegis with BRIGHT 2.0 for an effective integrated hardware-software solution for breast MR imaging and intervention.
- Take advantage of Sentinelle Medical's 24x7 toll-free Service and Applications hotline.

Try Aegis today!

Contact your Sentinelle representative for more information, or call 1-866-735-3744.

At Sentinelle Medical, we are dedicated to solving the real problems that radiologists, technologists and surgeons encounter in the detection and treatment of breast cancer. Our suite of advanced technologies for breast Magnetic Resonance Imaging (MRI) and intervention – including high performance coils, throughput-enhancing patient stretchers and innovative software solutions – creates an integrated, flexible and dedicated system, second to none.

**For more information and to purchase a product, please contact Sentinelle Medical at 1-866-735-3744 or mail to: [sales@sentinellemedical.com](mailto:sales@sentinellemedical.com)**

**[www.sentinellemedical.com](http://www.sentinellemedical.com)**

Sentinelle Medical Inc. reserves the right to make changes in features shown herein, or discontinue the product described at any time without notice.

08/09 SMI-AEGIS 03



**sentinelle**  
**MEDICAL**

**Confidence in Diagnosis. Accuracy in Intervention.**